

# SEA ANIMALS



# Jellyfish

I can be  
bigger than  
a human or  
smaller  
than a  
pinhead





# Seahorse

Despite I  
am a fish,  
I am a  
bad  
swimmer



# sponge

I move only  
a couple of  
millimeters  
each day





# lobster

I can be very  
different  
colours,  
including  
bright blue



# dolphin

Dolphins  
communicate  
through sounds  
and whistles





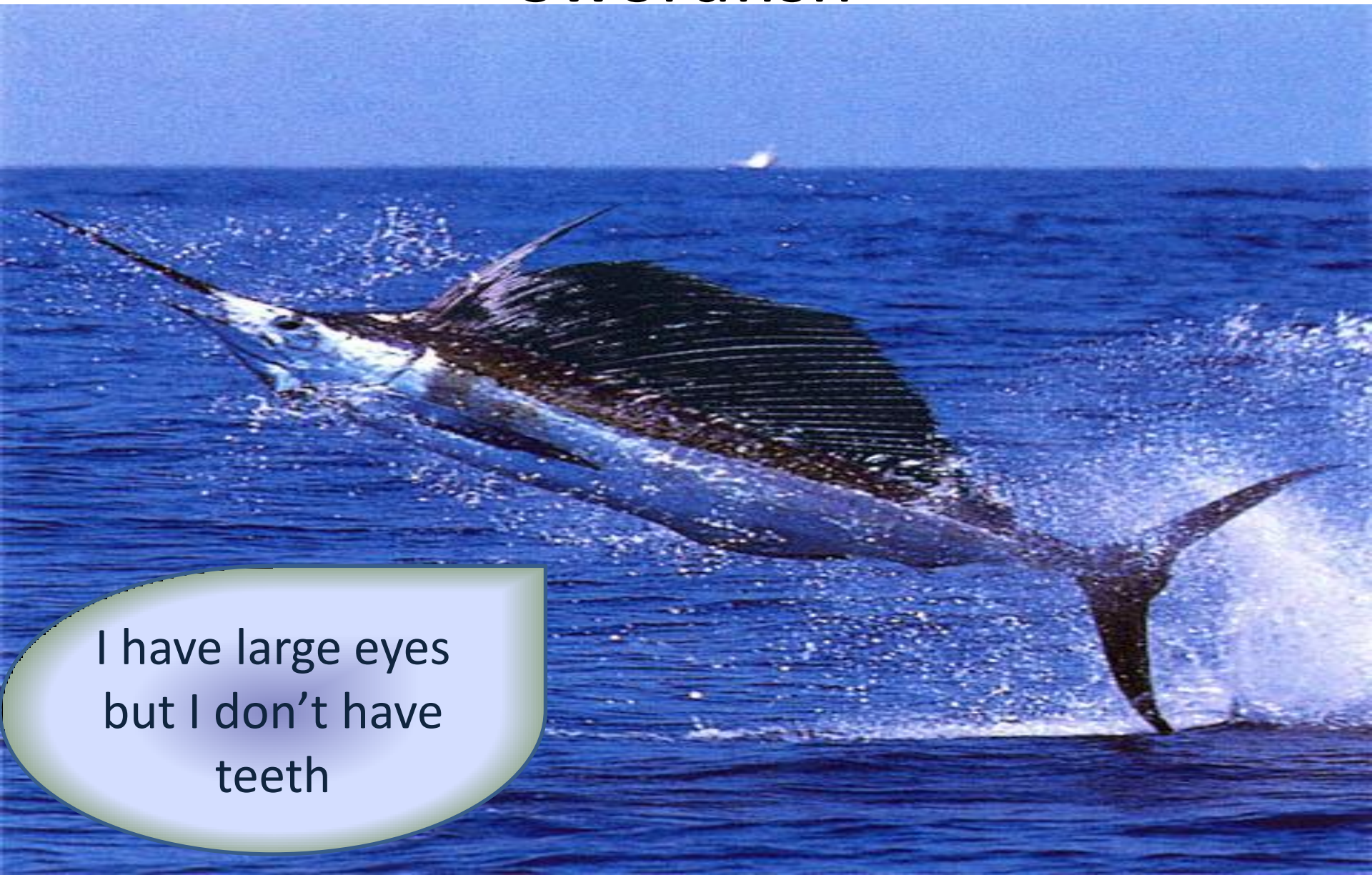
# killerwhale



I am one of the most powerful predators



# Swordfish

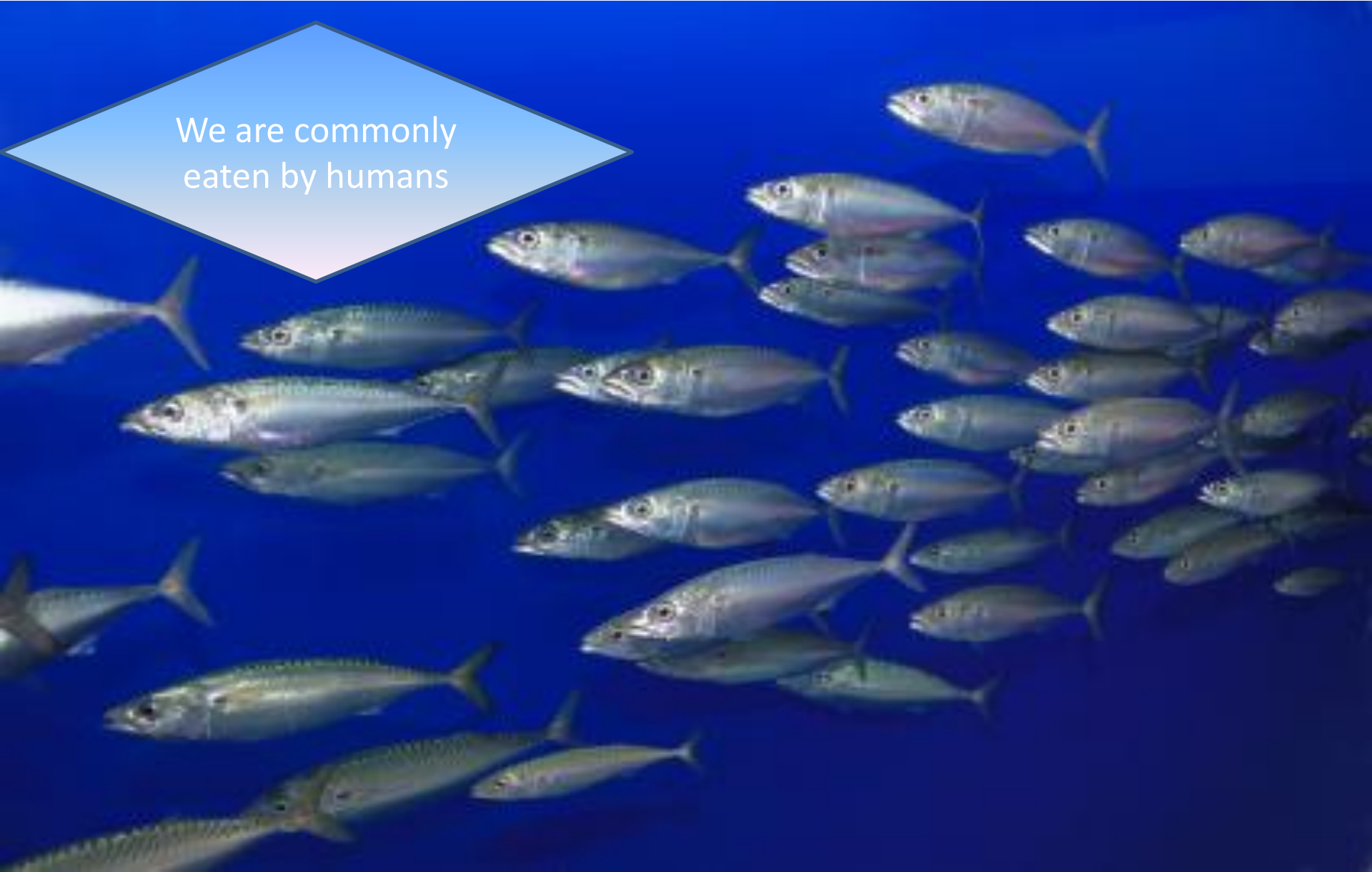


I have large eyes  
but I don't have  
teeth



# sardine

We are commonly  
eaten by humans



# oyster

Only about one  
in 10,000 oysters  
contains a pearl.





eel



I can produce  
electricity

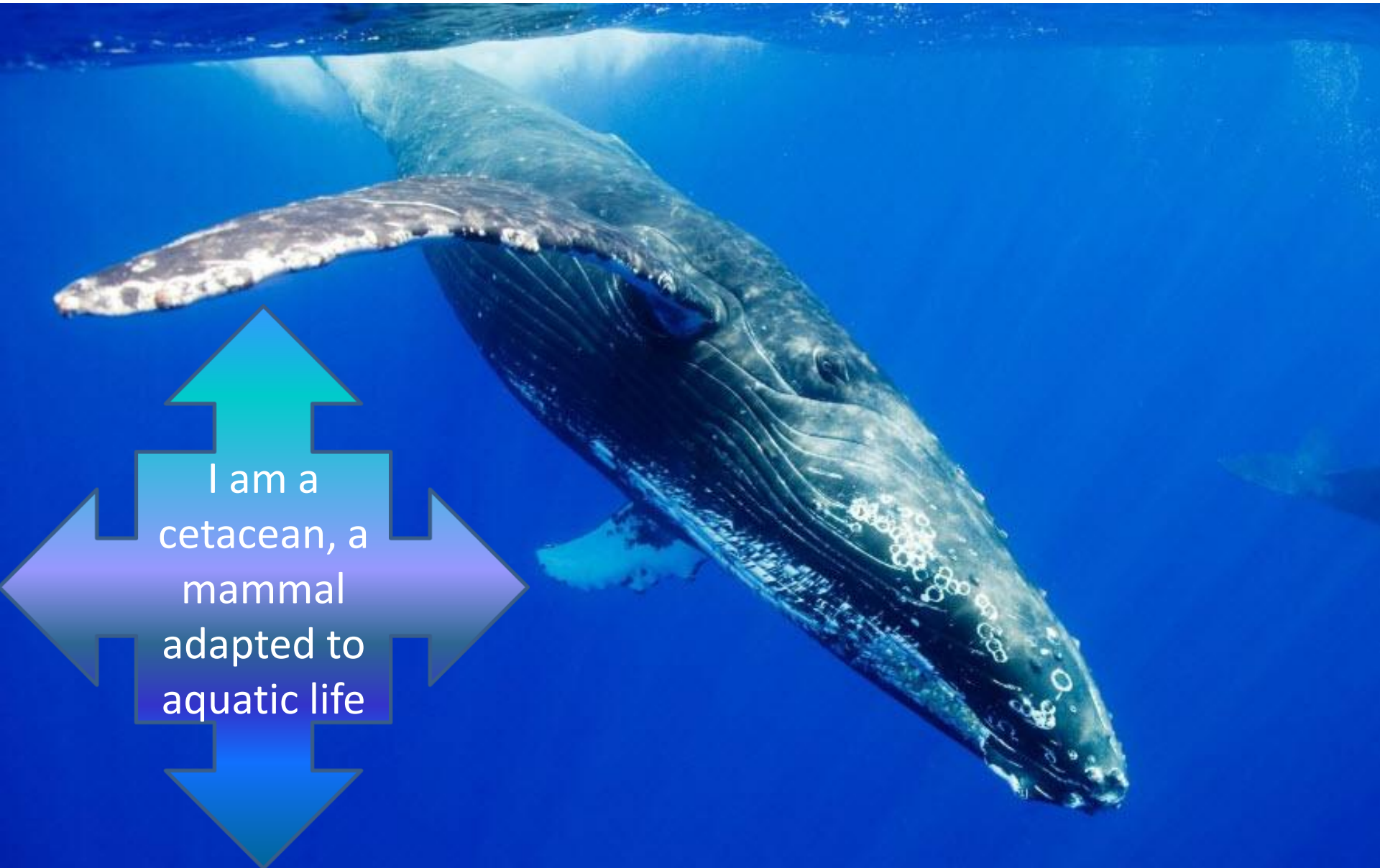
# Manta ray



I am an  
extremely fast  
swimmer



# Blue whale



I am a  
cetacean, a  
mammal  
adapted to  
aquatic life

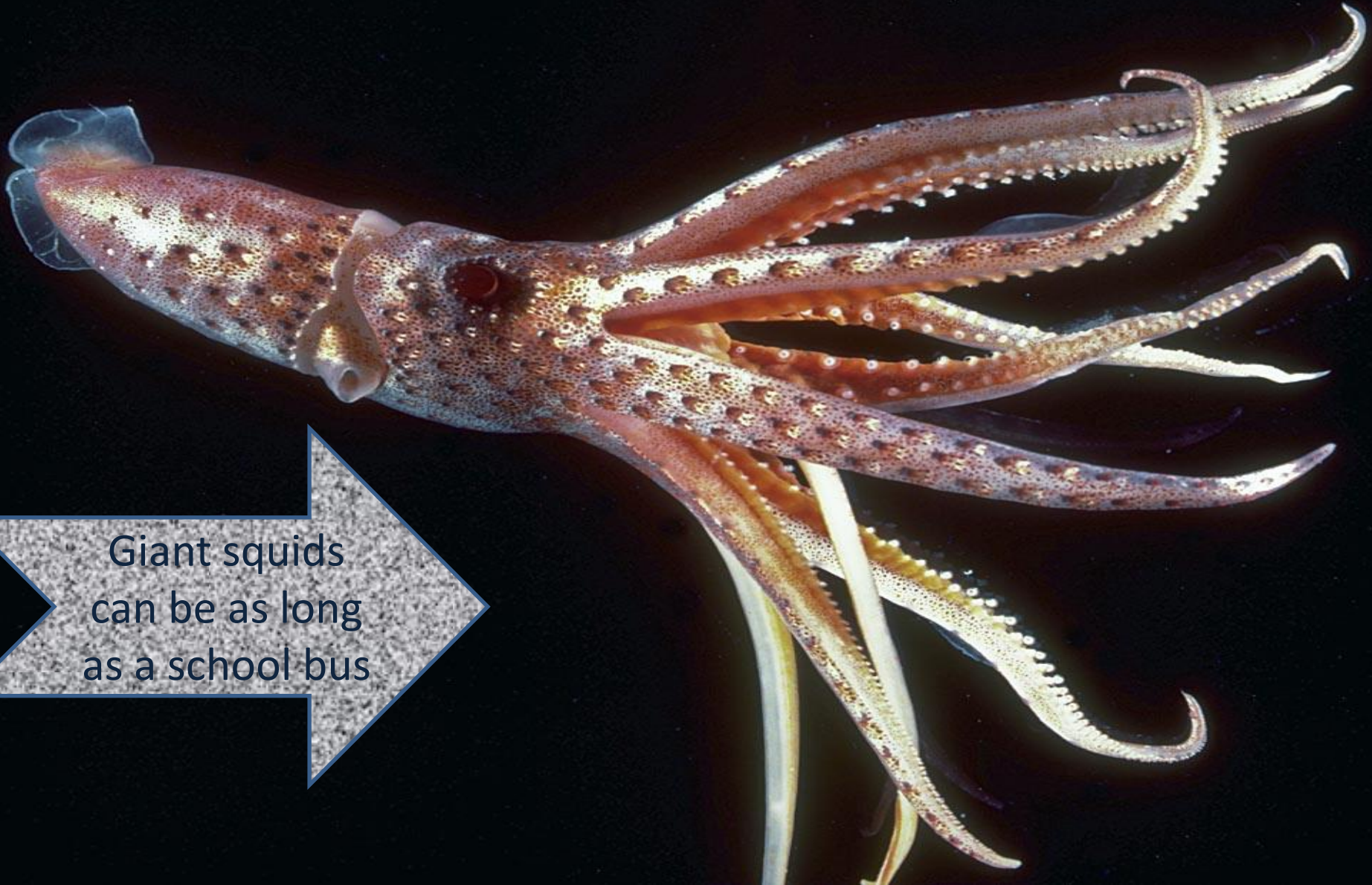
# Sea turtle



I am one of the Earth's most ancient creatures



# squid



Giant squids  
can be as long  
as a school bus

# barracuda



I am a  
nocturnal  
animal



# tuna



I am nomadic.  
I don't spend  
all my life in a  
single place.

# clownfish



I eat algae,  
plankton,  
molluscs, and  
small crustaceans



# starfish



I'm not a  
fish. I'm an  
echinoderm



clam



I don't have  
eyes, ears or  
nose



crab

If I lose  
a claw,  
it grows  
back



# octopus

I've got  
eight legs





# Shark



I can have from 1 to 100  
babies at a time

# hammerhead

I am listed as one  
of the most  
endangered  
species





mussel

I am a bivalve  
mollusk



# salmon



I begin my life in fresh water but I move to salt water to feed



# anemone

I don't  
have a  
skeleton



# cod

I can survive  
up to 25  
years in the  
wild





# walrus

I have a very thick skin. It protects me from the cold water





seal

I am a semiaquatic  
marine mammal

